

Subpart P App F - Selection of Protective Systems

The following figures are a graphic summary of the requirements contained in subpart P for excavations 20 feet or less in depth. Protective systems for use in excavations more than 20 feet in depth must be designed by a registered professional engineer in accordance with 1926.652(b) and (c).

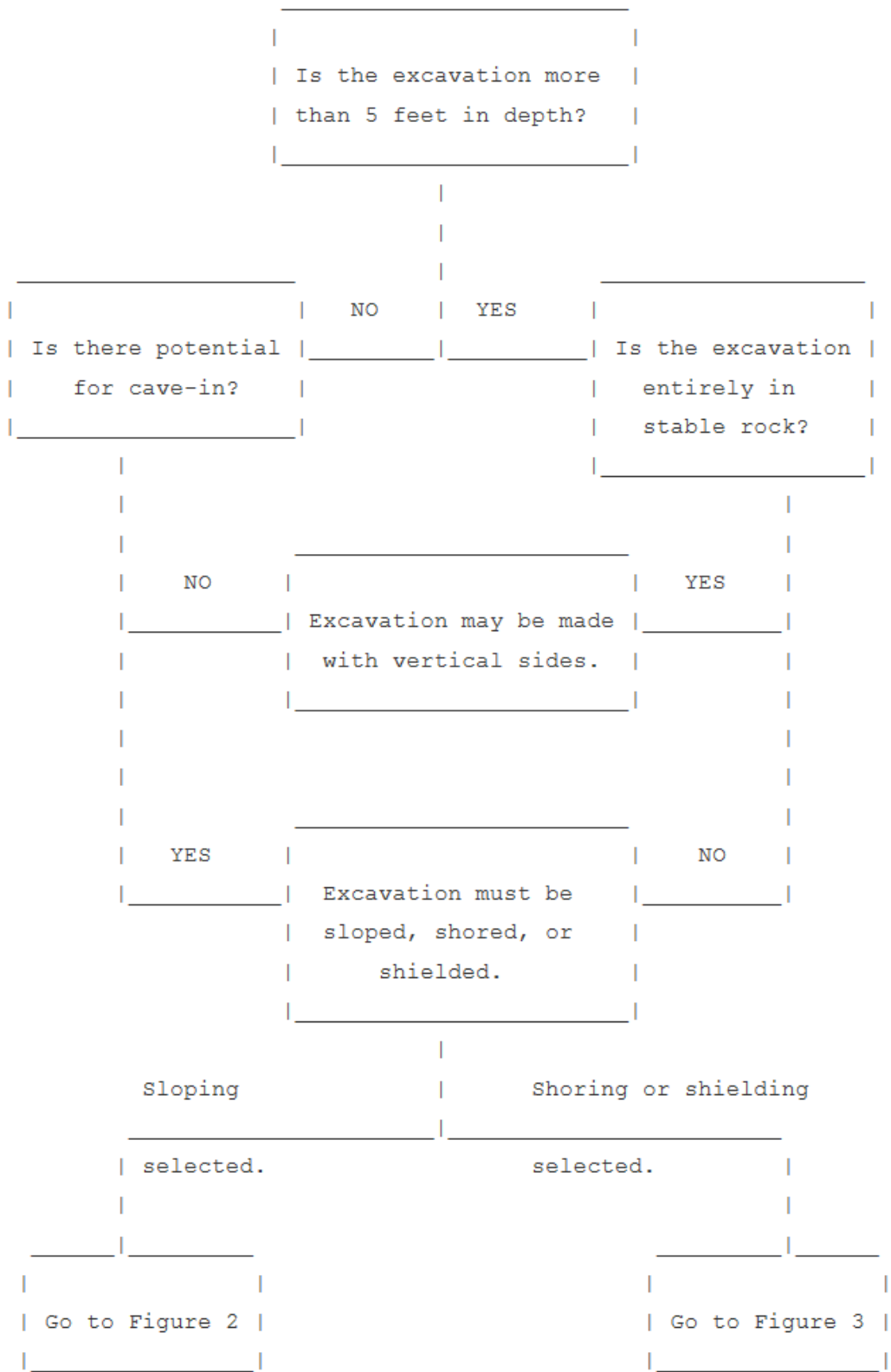


Figure 1 – PRELIMINARY DECISIONS

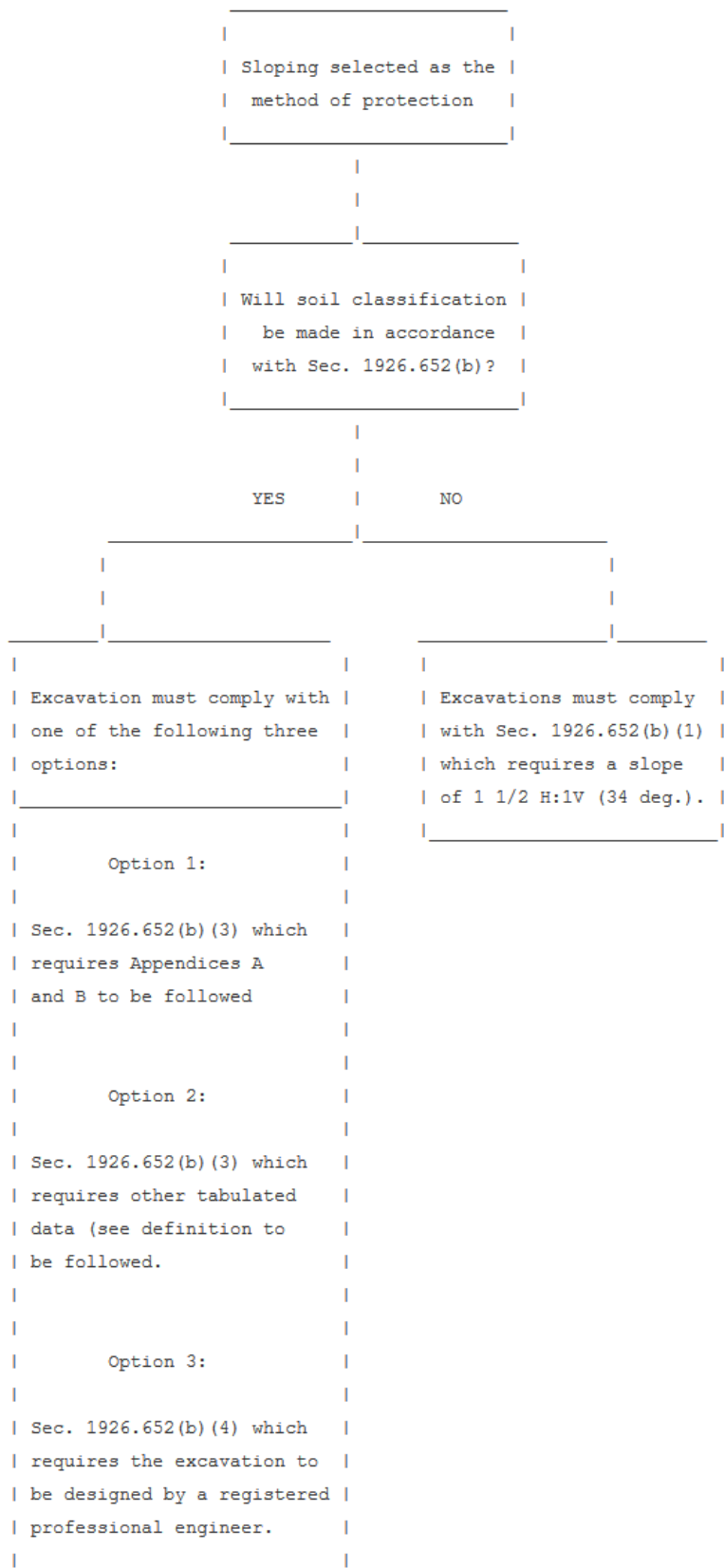


Figure 2 - SLOPING OPTIONS

Shoring or shielding selected as the method of protection.
Soil Classification is required when shoring or shielding is used. The excavation must comply with one of the following four options:
Option 1
Sec. 1926.652(c) (1) which requires Appendices A and C to be followed (e.g. timber shoring).
Option 2
Sec. 1926.652(c) (2) which requires manufacturers data to be followed (e.g. hydraulic shoring, trench jacks, air shores, shields).
Option 3
Sec. 1926.652(c) (3) which requires tabulated data (see definition) to be followed (e.g. any system as per the tabulated data).
Option 4
Sec. 1926.652(c) (4) which requires the excavation to be designed by a registered professional engineer (e.g. any designed system).

Figure 3 - SHORING AND SHIELDING OPTIONS